

#16.328



Farmers Electric Cooperative

2000 I-30 E - Greenville, TX 75402
(903) 455-1715

Thursday, August 13, 2020

Office of County Commissioners
PO BOX 1097
Greenville TX 75403

Farmers Electric Cooperative Member: LUIS DELEON
Service Order Number: 2020075576

Greetings:

Farmers Electric Cooperative, Inc. is requesting permission to construct electrical power distribution facilities which will cross County Road 4206 which is located 1670 ft south east of CR 4111 in Hunt County, Texas.

Site location map and construction sketches are enclosed. The construction sketch details the proposed work. All road crossings will have a minimum vertical clearance of 22 feet.

If you have any questions, please contact me at any time.

Sincerely,

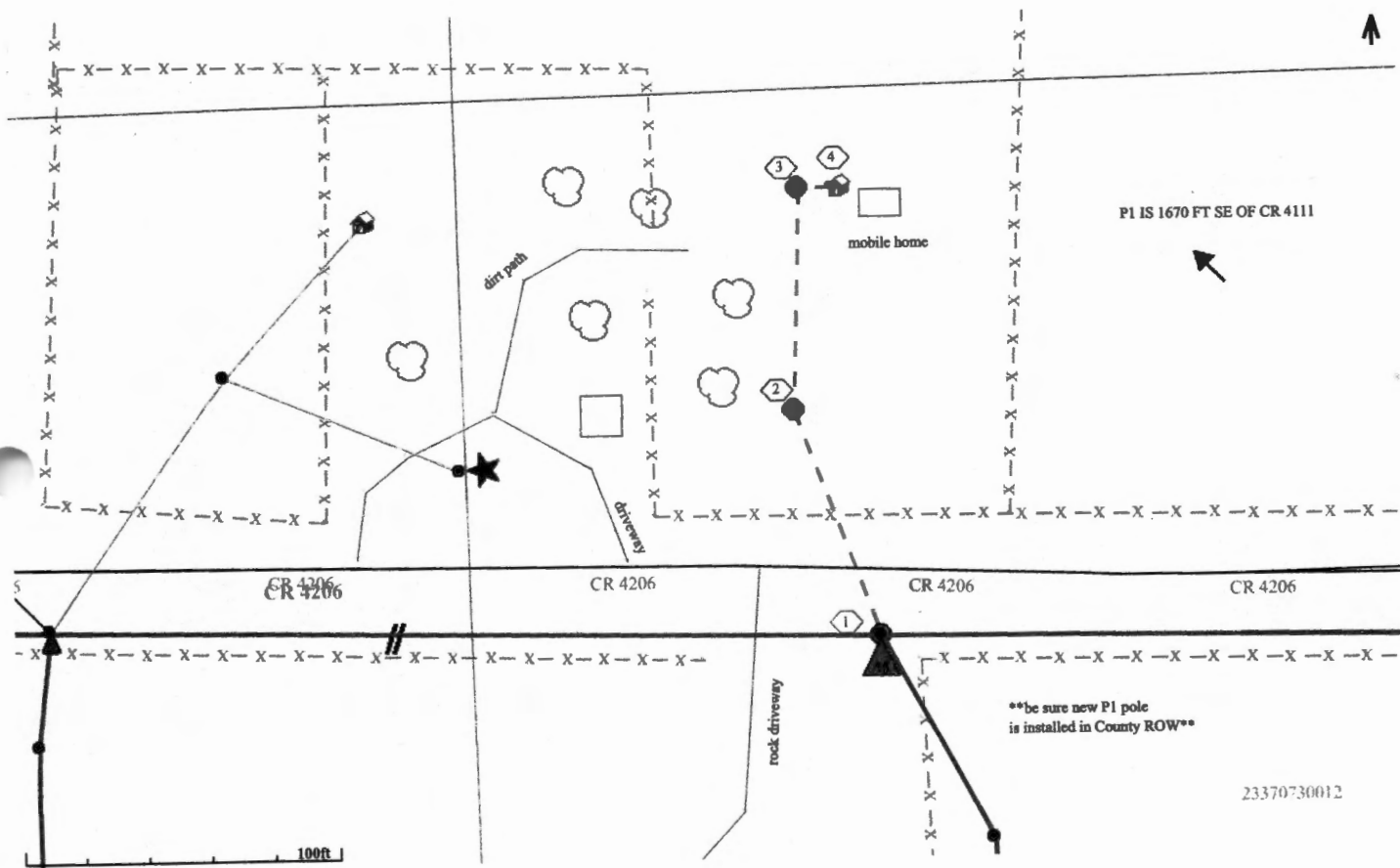
Meagan Lee

Project Coordinator
meaganl@farmerselectric.coop
Phone 903-513-0378

Submitted by Brandon Darrow
bdarrow@farmerselectric.coop
Field Engineering Coordinator

Enclosures

FILED FOR RECORD
at 12:00 o'clock P M
AUG 25 2020
JENNIFER LINDENZWEIG
County Clerk, Hunt County, TX
By: *Jennifer Lindenzweig*



P1 IS 1670 FT SE OF CR 4111

be sure new P1 pole is installed in County ROW

23370730012